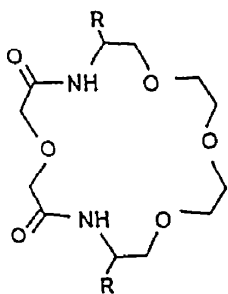


CORRIGENDUM

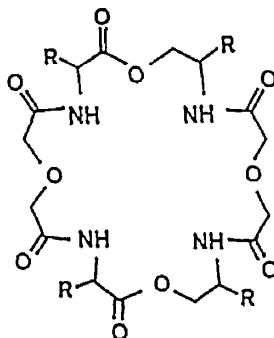
H. KATAOKA and T. KATAGI, *Tetrahedron* **43**, 4519 (1987).

Chart 1 on page 4520 does not contain the compound numbers. The correct chart is given below.

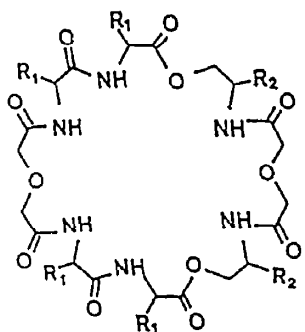
Table 3 on page 4524 lists the wrong P value for PPL-30. The P value of 1430 in the fifth column should be changed to 4130.



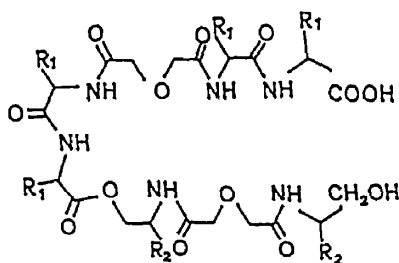
17, (P-18), R: $\text{CH}_2\text{C}_6\text{H}_5$



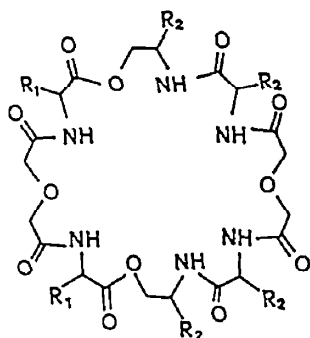
18, (PP-24), R: $\text{CH}_2\text{C}_6\text{H}_5$
19, (LL-24), R: $\text{CH}_2\text{CH}(\text{CH}_3)_2$



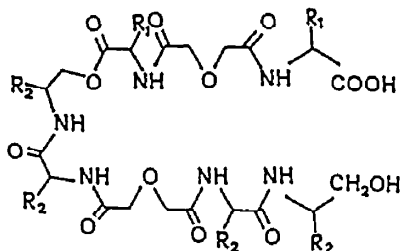
20, (LLL-30), $\text{R}_1=\text{R}_2$: $\text{CH}_2\text{CH}(\text{CH}_3)_2$
21, (LLP-30), R_1 : $\text{CH}_2\text{CH}(\text{CH}_3)_2$, R_2 : $\text{CH}_2\text{C}_6\text{H}_5$
22, (PPL-30), R_1 : $\text{CH}_2\text{C}_6\text{H}_5$, R_2 : $\text{CH}_2\text{CH}(\text{CH}_3)_2$
23, (SSP-30), R_1 : $\text{CH}_2\text{OCH}_2\text{C}_6\text{H}_5$, R_2 : $\text{CH}_2\text{C}_6\text{H}_5$



24, (LLP-30L),
 R_1 : $\text{CH}_2\text{CH}(\text{CH}_3)_2$, R_2 : $\text{CH}_2\text{C}_6\text{H}_5$



25, (LSS-30),
 R_1 : $\text{CH}_2\text{CH}(\text{CH}_3)_2$, R_2 : $\text{CH}_2\text{OCH}_2\text{C}_6\text{H}_5$.



26, (LSS-30L),
 R_1 : $\text{CH}_2\text{CH}(\text{CH}_3)_2$, R_2 : $\text{CH}_2\text{OCH}_2\text{C}_6\text{H}_5$.

Correct Chart 1